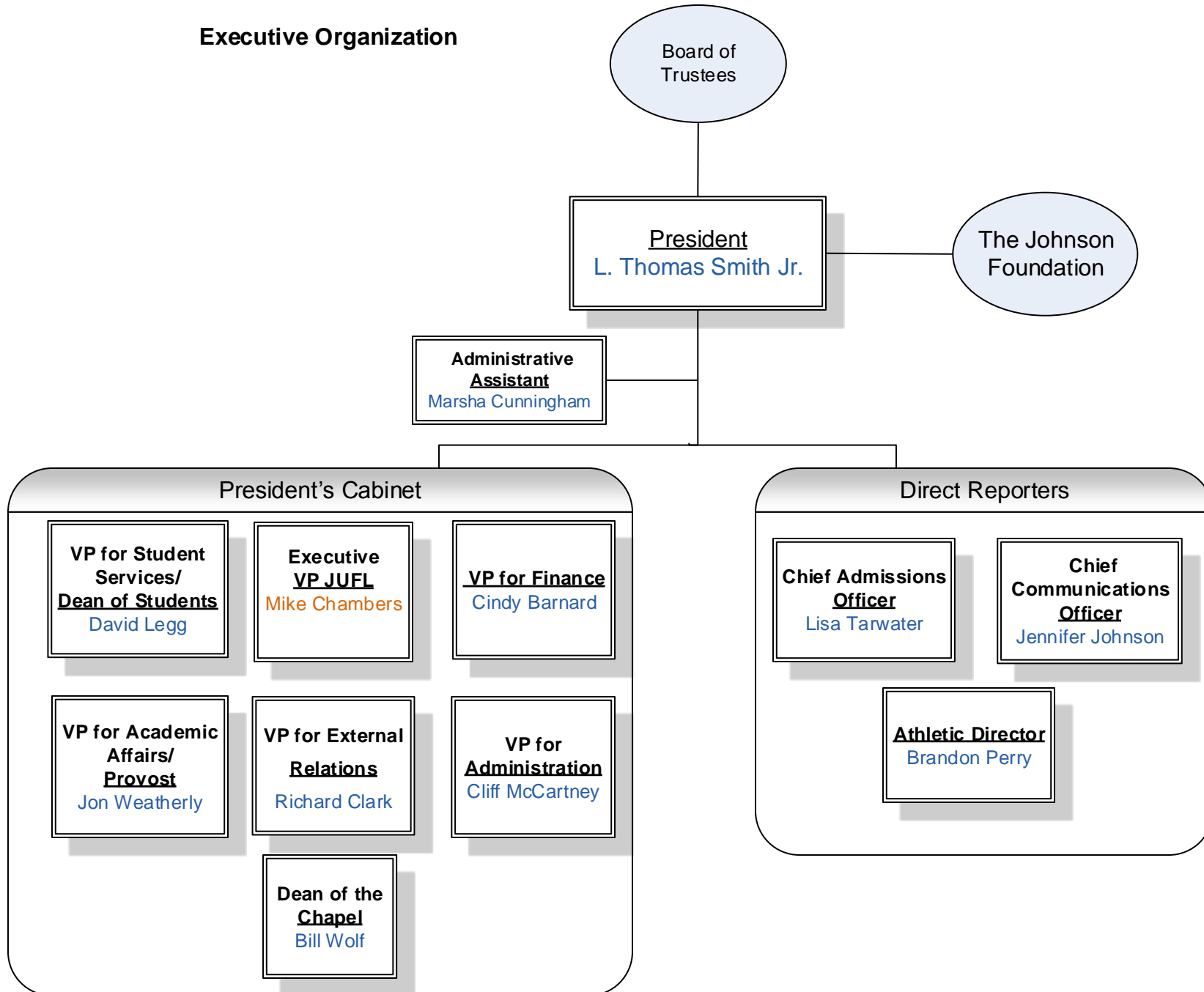
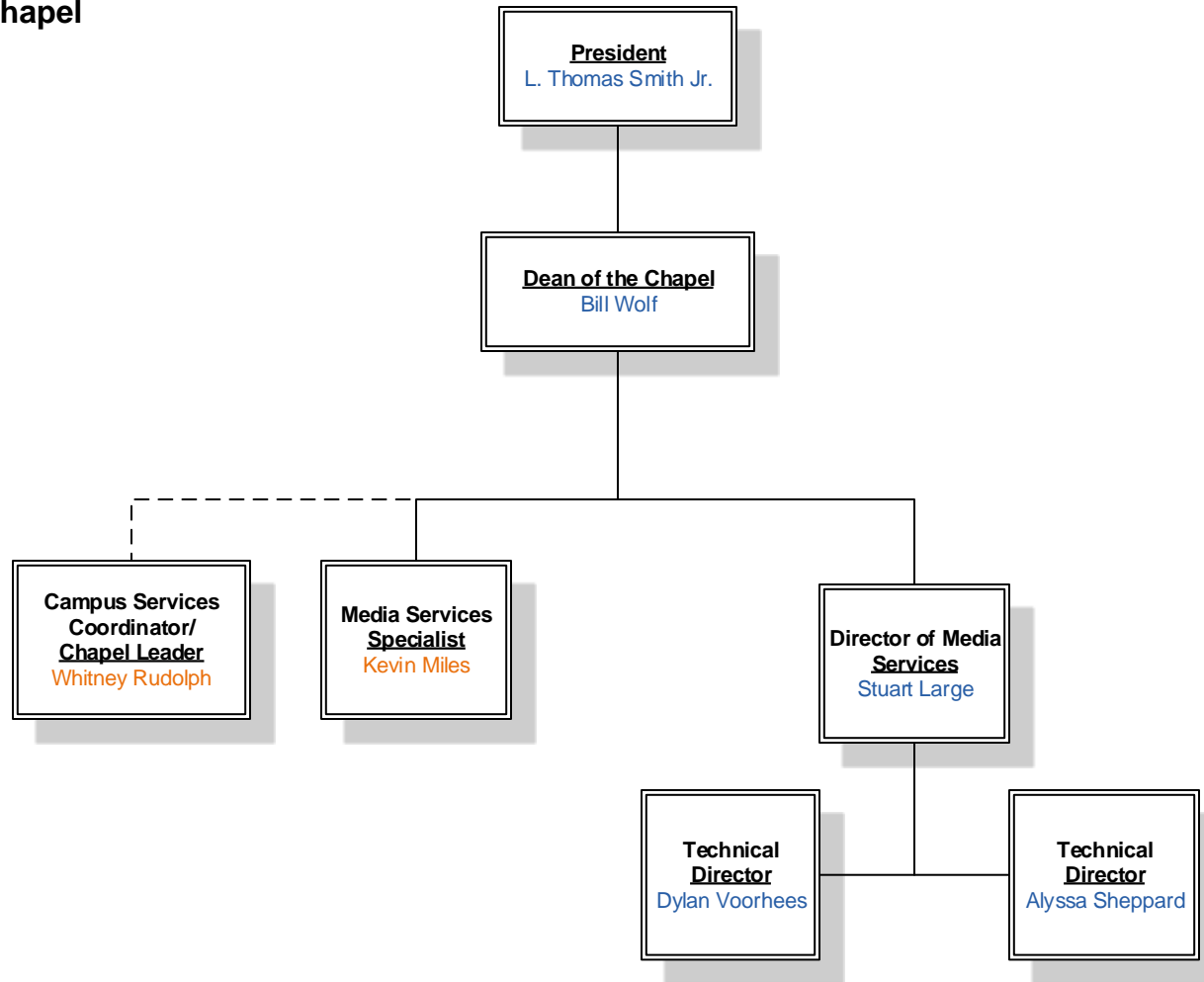


Executive Organization

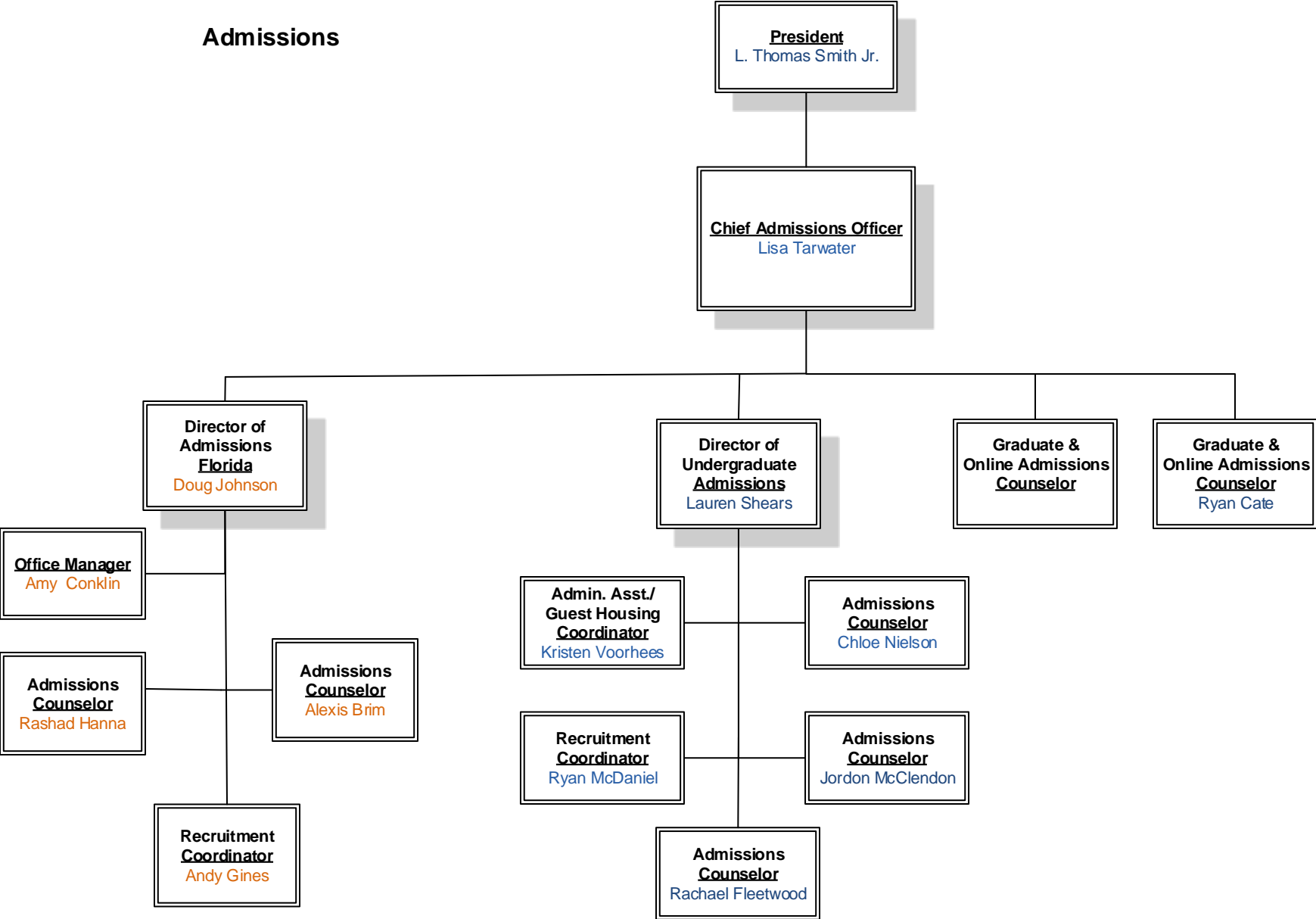


Chapel

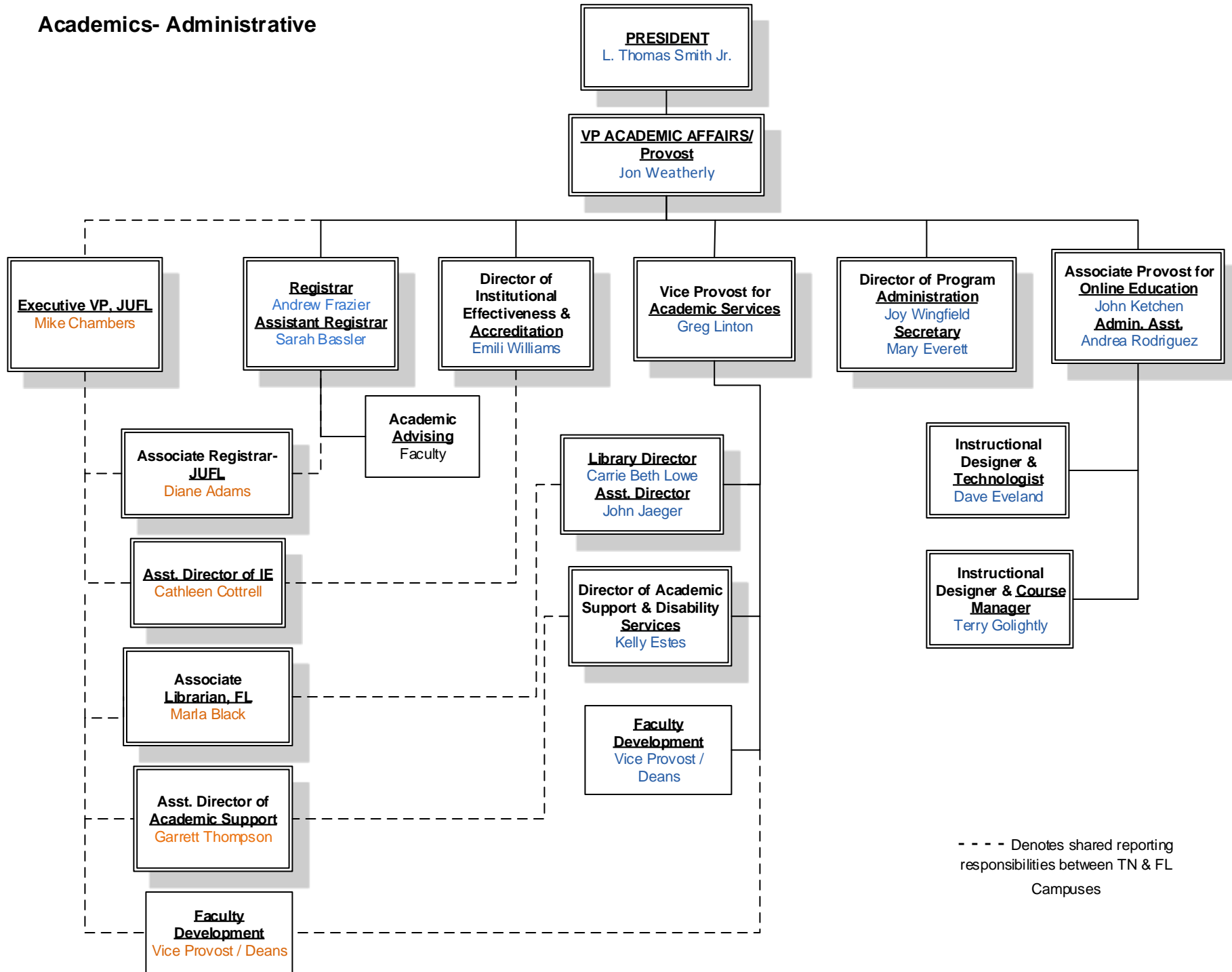


- - - - Denotes shared reporting responsibilities between TN & FL Campus'

Admissions

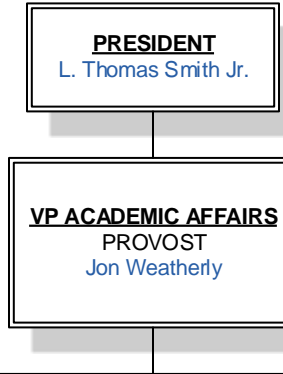


Academics- Administrative



- - - - Denotes shared reporting responsibilities between TN & FL Campuses

Academics- Schools



Schools

Arts & Sciences
Dean: Gary Stratton
Assoc. Dean: April Kilinski
Admin. Asst.: Sally Folden
Program Directors:
April Kilinski, Jason Mead,
Cindi Norton, Gerald Mattingly, Trevor Egli,
Landon Huffman, Craig Wilsman
Assessment: Landon Huffman

Bible & Theology
Dean: Mark Ziese
Asst. Dean: Les Hardin
Admin. Asst.: Marsha Ketchen
Program Directors:
Mark Ziese, Greg Linton,
Daniel Overdorf, Jeff Snell
Assessment: Jerome Prinston

Business & Public Leadership
Dean: Catherlyn Brim
Admin. Asst.: John Stricklen
Academic Coordinator:
Debbie Scanlan
Program Directors:
Carol Decker, Wilbur Reid III,
Alicia Crumpton
Assessment: Carol Decker

Intercultural Studies
Dean: Linda Whitmer
Office Mngr: Sally Folden
Program Directors:
Steve Whitmer, Linda Whitmer,
Kendi Howells-Douglas
Assessment: Kim Linton

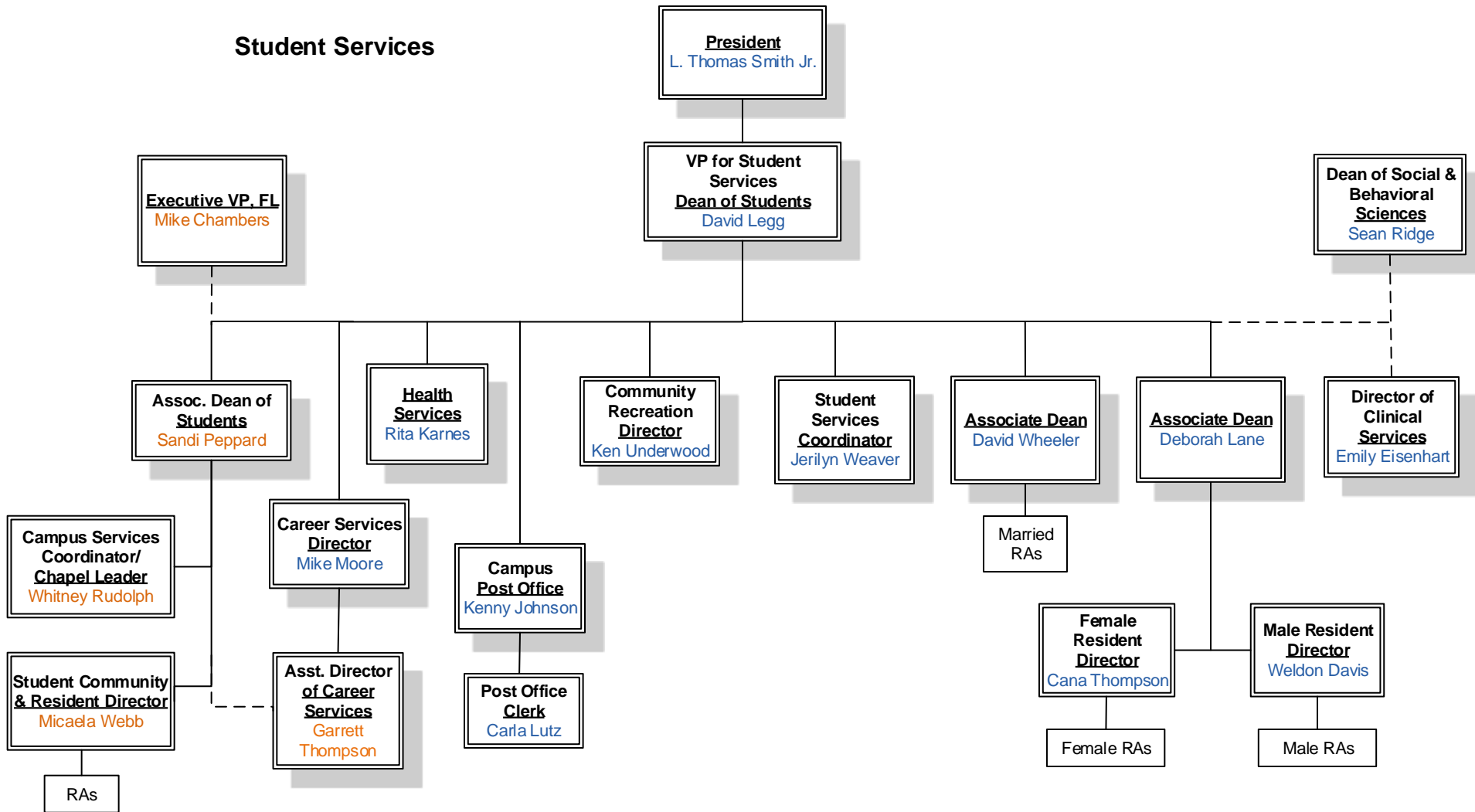
Congregational Ministry
Dean: Daniel Overdorf
Admin. Asst.: Cathy Taylor
IN: Mike Shannon
Program Directors:
Daniel Overdorf, Brian Leslie,
Mike Shannon, Jeff Snell
Assessment- Kealy Mead

Communication & Creative Arts
Dean: Matthew Broaddus
Asst. Dean: Ruth Reyes
Admin. Asst.: Becky Eveland
Program Directors:
Matthew Broaddus, Don Trentham,
Ruth Reyes, Brent Weaver
Assessment: Becky Eveland

Social & Behavioral Sciences
Dean: Sean Ridge
Asst. Dean: Nealy Brown
Office Manager: Jody Miller
Program Directors:
Kristel Headley, Nealy Brown,
Camden Morgante,
Assessment: Pete Cummins

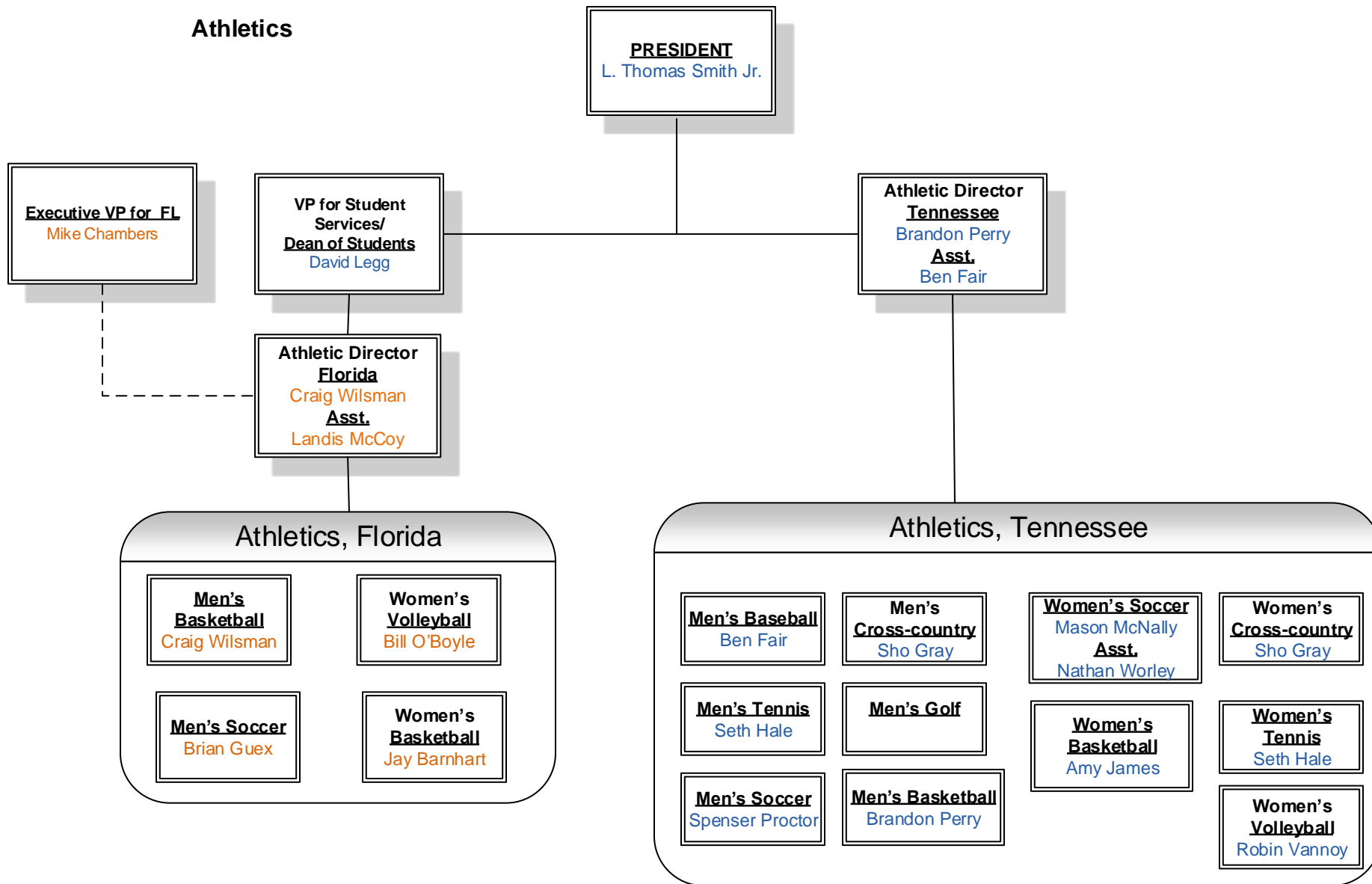
Templar School of Education
Dean: Roy Miller
Asst. Dean: Wendy Guthrie
Program Directors:
Pat Fuller, Wendy Guthrie,
Chris Templar, Nikki Votaw; Duan Hua
Coordinators- Karla Hunt,
Lisa Hale, Karen Estep
Assessment: Karla Hunt

Student Services



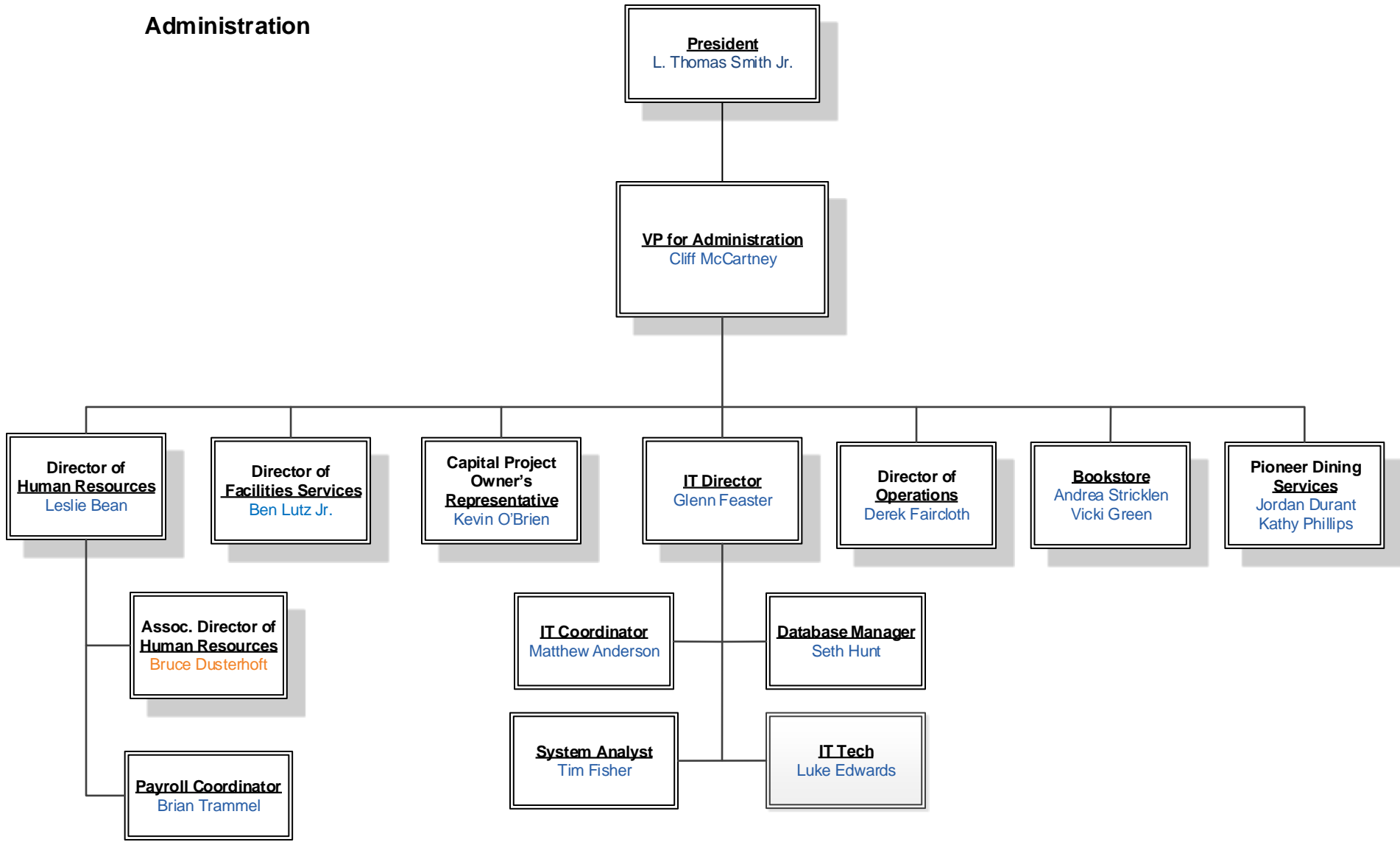
- - - - Denotes shared reporting responsibilities

Athletics

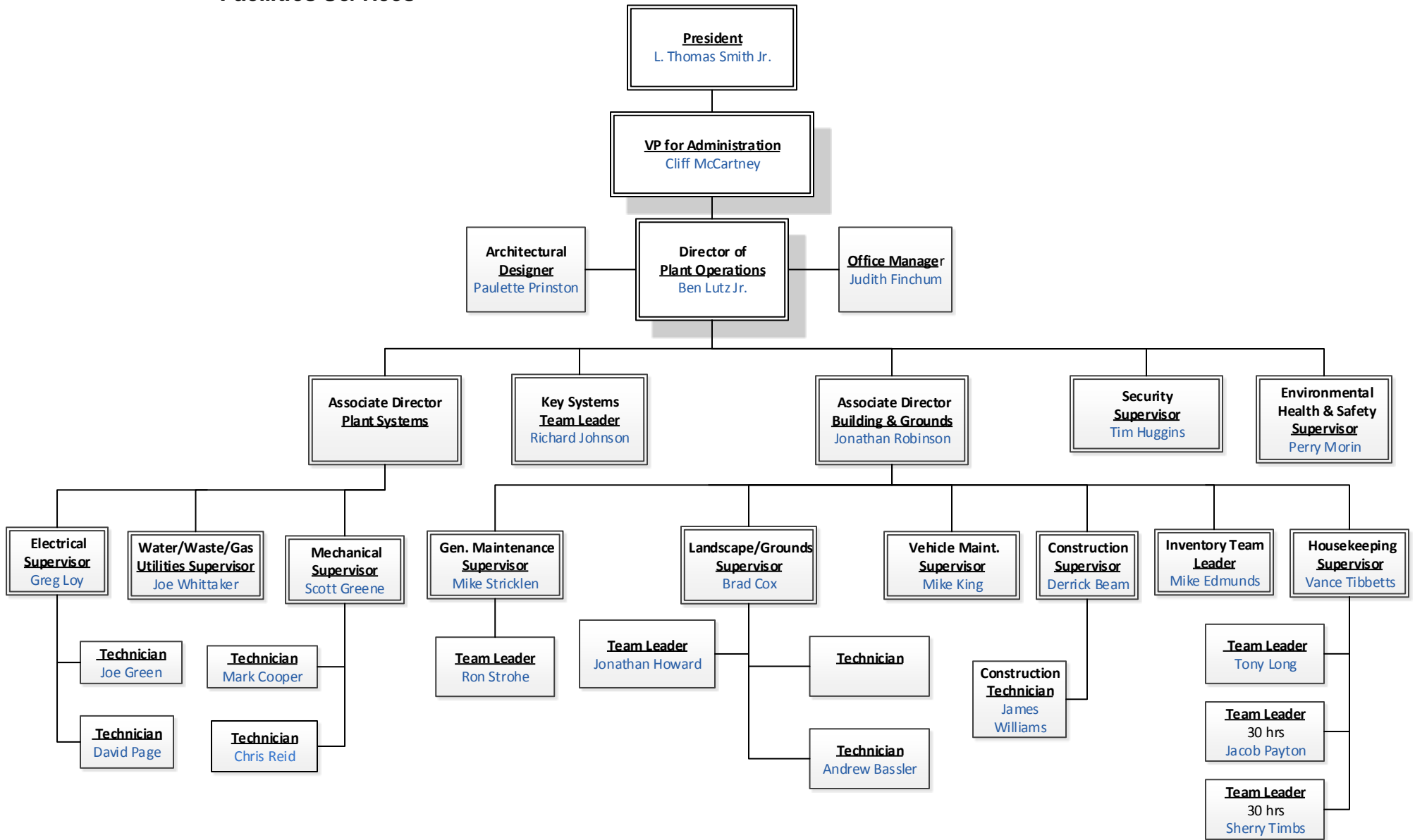


- - - - Denotes shared reporting responsibilities with TN Campus

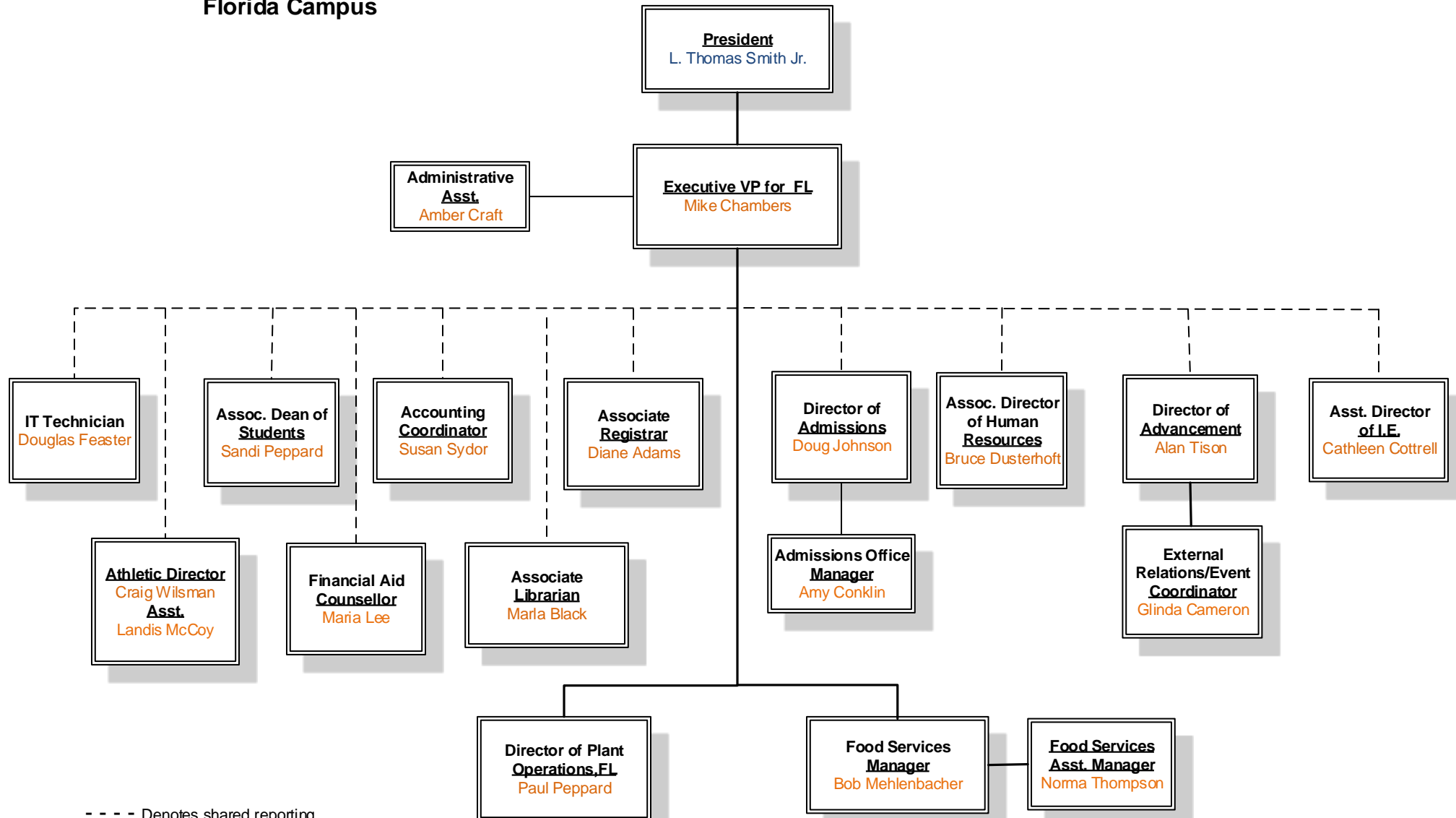
Administration



Administration- Facilities Services

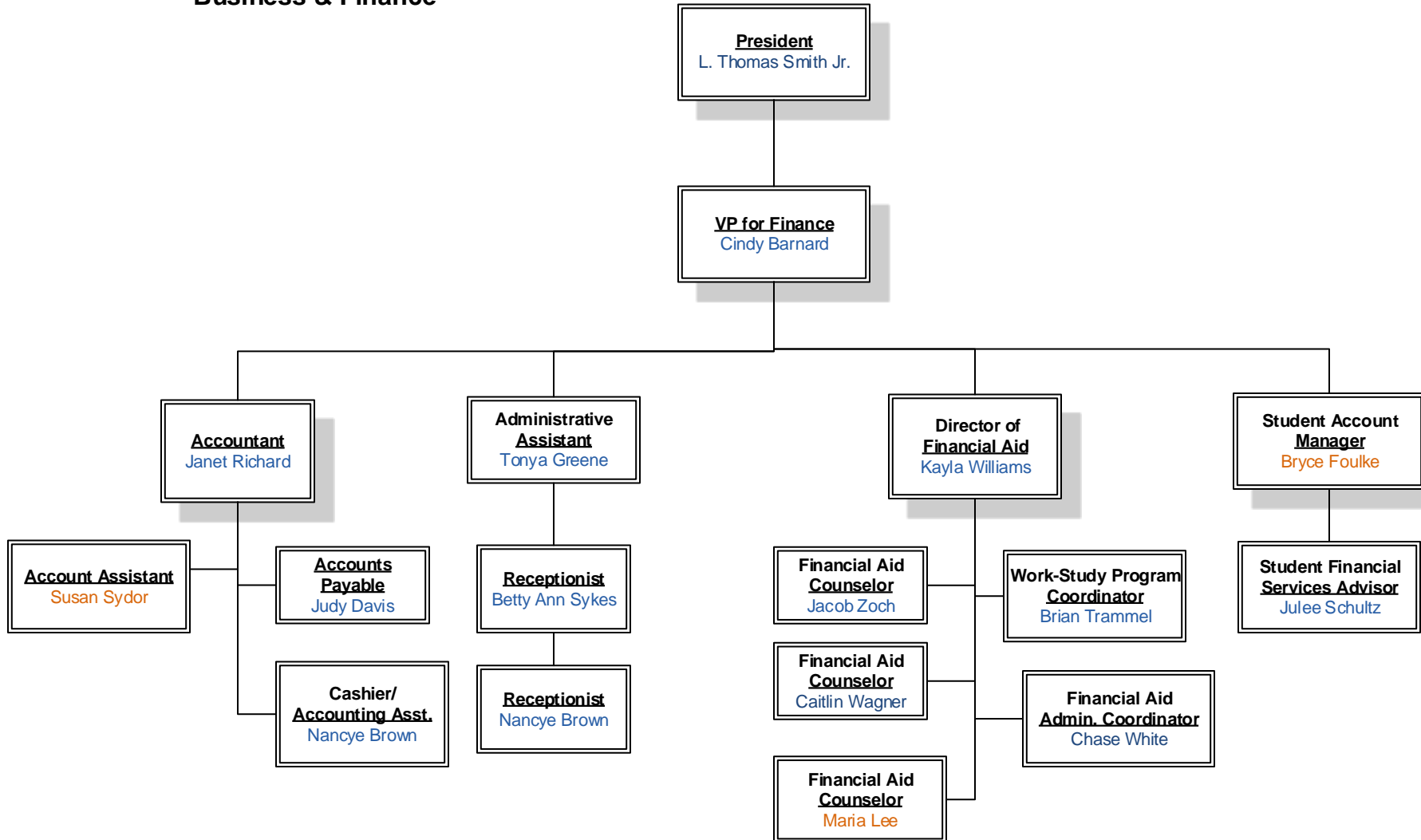


Administration, Florida Campus

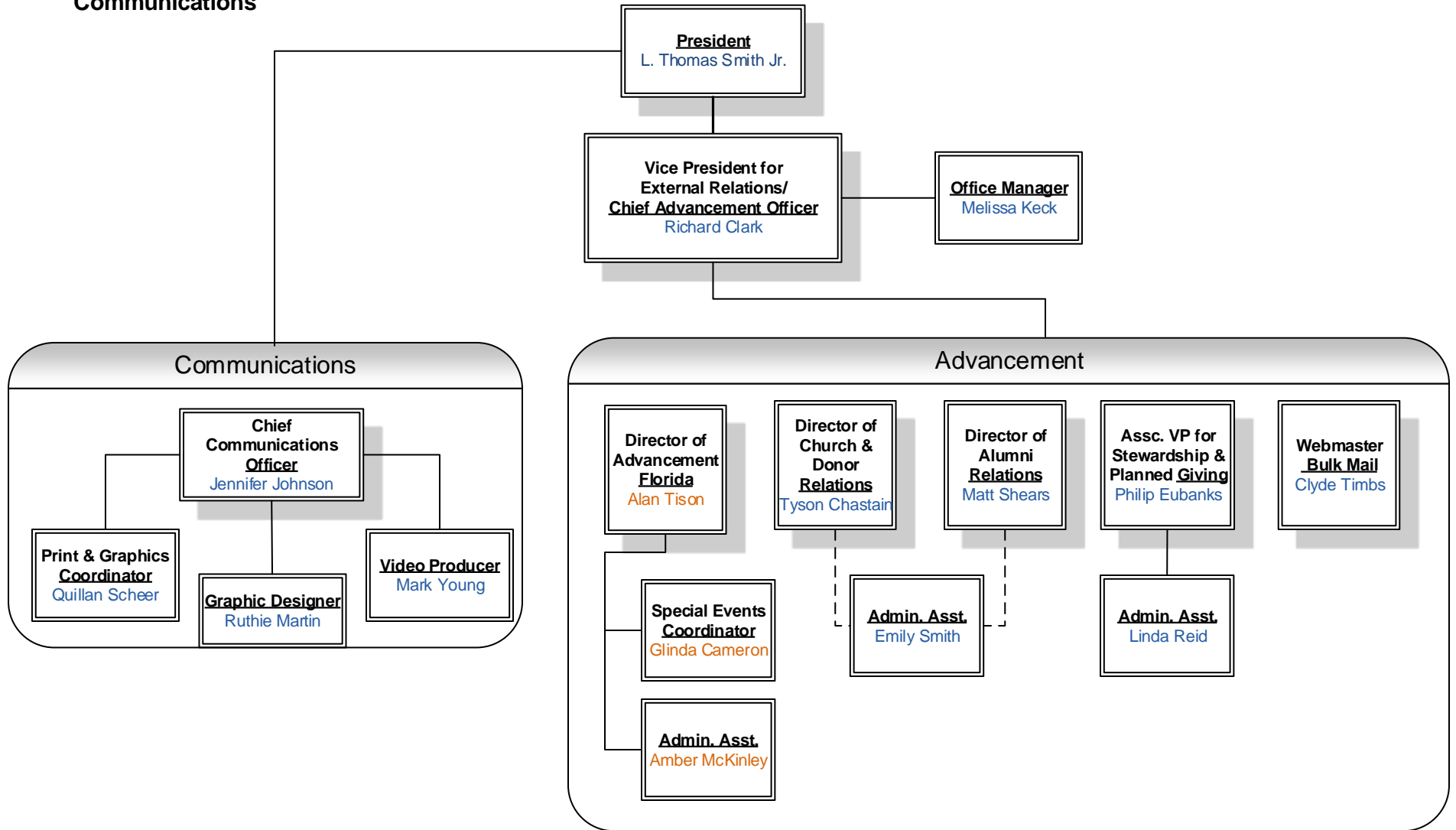


- - - - Denotes shared reporting responsibilities with TN Campus

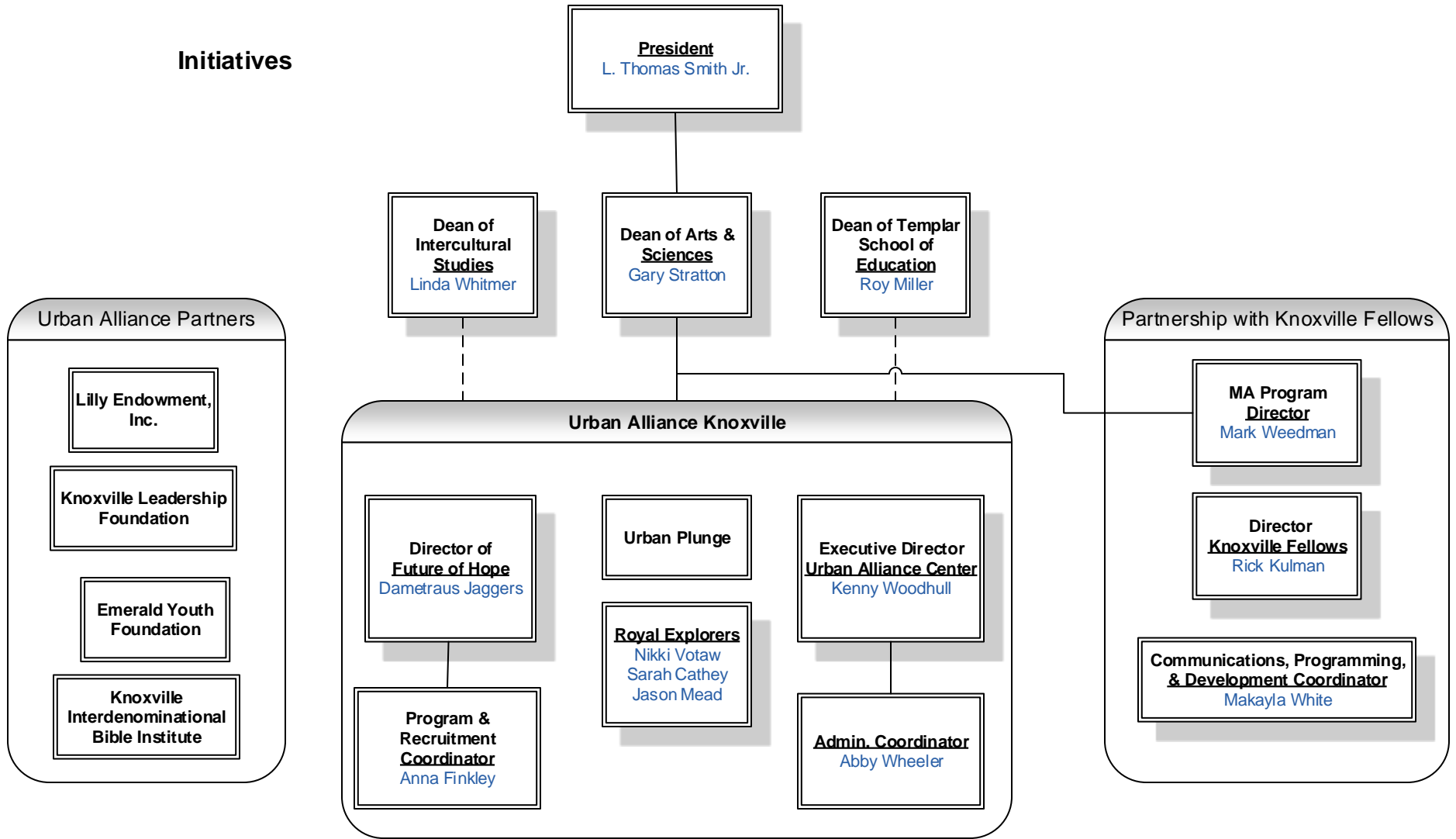
Business & Finance



**External Relations -
Advancement and
Communications**



Initiatives



- - - - Denotes shared reporting responsibilities